



**OPERATION:**

Gypsum is a by-product of phosphate which is used as fertilizer. This gypsum must be hauled from the phosphate field for further processing into wallboard, etc. The railroad cars used for hauling the gypsum are rubber lined for corrosion resistance. After a short period of time, the gypsum builds up on the inside of the tankers and must be removed because of the increasing weight added to the train. Sandblasting was formerly used to remove the gypsum, but because it left a mess and often removed a great deal of the rubber coating on the inside of the tanks, a better method was selected. Now a CAT PUMP high pressure sprayer is used. The spray works its way under the edge of the thick gypsum build-up and blasts it free. The pressure and flow varies depending upon the thickness of the gypsum build-up. The new pressure sprayer is also used to clean the dirty exterior of the tankers, because the identification markings must be visible. With the old sandblasting method, many of the markings were removed along with the dirt and these were time consuming and expensive to redo.

**GYPSUM REMOVAL  
RAILROAD TANKERS**

**File No. 179**

**Section 7**

**PROBLEM:**

To find an efficient means of removing the gypsum build-up from inside railroad tank cars.

**SOLUTION:**

Use a high pressure portable water blaster.

**SPECIFICATIONS:**

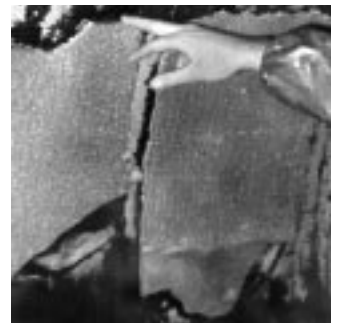
CAT PUMPS Model .....	*1044
Pressure .....	2000 PSI
Flow .....	10 GPM
Temperature .....	Ambient
Fluid .....	Water
Duty Cycle .....	Intermittent
Drive .....	15 H.P. Electric

\*Alternate CAT PUMP model 1050.

**BENEFITS:**

- Eliminated messy clean-up with sand and saves time as the water dries quickly.
- More pleasant function as the tanker remains cooler inside with pressure cleaning.
- Exterior clean-up done quickly and without damage to surface or tanker markings.

After spraying, the gypsum begins to erode and the spray gets under the edge and blasts large sections free from the rubber wall.



Products described hereon are covered by one or more of the following U.S. patents 3558244, 3652188, 3809508, 3920356, 3930756 and 5035580

Aug 1999 8940

## **World Headquarters**

### **CAT PUMPS**

**1681 - 94th Lane N.E. Minneapolis, MN 55449-4324**

**Phone (612) 780-5440 — FAX (612) 780-2958**

e-mail: [sales@catpumps.com](mailto:sales@catpumps.com)

[www.catpumps.com](http://www.catpumps.com)

## **International Inquiries**

**FAX (612) 785-4329**

e-mail: [intlsales@catpumps.com](mailto:intlsales@catpumps.com)



*The Pump with "Nine Lives"*

## **CAT PUMPS (U.K.) LTD.**

1 Fleet Business Park, Sandy Lane, Church Crookham, Fleet  
Hampshire GU13 0BF, England

Phone Fleet 44 1252-622031 — Fax 44 1252-626655

## **N.V. CAT PUMPS INTERNATIONAL S.A.**

Heiveldkens 6A, 2550 Kontich, Belgium  
Phone 32-3-450.71.50 — Fax 32-3-450.71.51

e-mail: [cpi@catpumps.be](mailto:cpi@catpumps.be) [www.catpumps.be](http://www.catpumps.be)

## **CAT PUMPS DEUTSCHLAND GmbH**

Buchwiese 2, D-65510 Idstein, Germany  
Phone 49 6126-93030 — Fax 49 6126-930333  
e-mail: [catpumps@t-online.de](mailto:catpumps@t-online.de) [www.catpumps.de](http://www.catpumps.de)