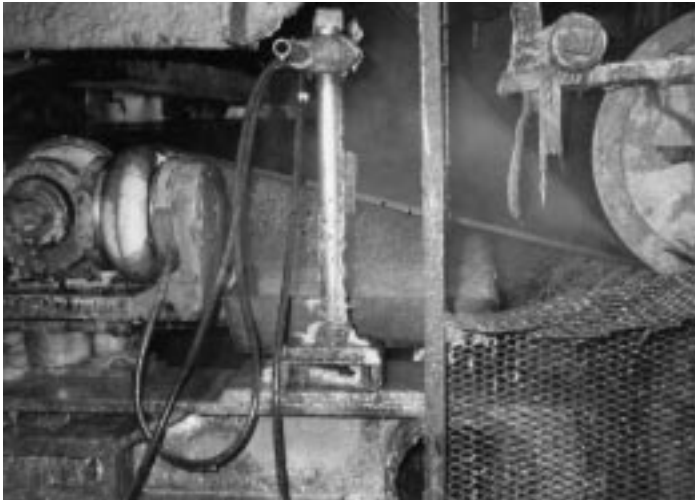


# APPLICATIONS

## PUMPS



## FELT AND WIRE SCREEN WASHER

File No. 134

### Section 6

#### PROBLEM:

To improve the life of paper mill felts and wire screens.

#### SOLUTION:

Install a high pressure spray cleaning system using a model 6020 CAT PUMP.

#### SPECIFICATIONS:

CAT PUMPS Model .....	6020
Pressure .....	900 PSI
Flow .....	50 GPM
Temperature .....	Ambient
Fluid .....	Cold Water
Duty Cycle .....	Continuous
Drive .....	500 H.P. V-Belt

#### BENEFITS:

- Longer lasting screens due to regular cleaning.
- Better paper product due to better moisture removal with clean felts and wire screens.
- Convenience of screen and felt cleaning because it is part of the paper process.
- CAT PUMP maintenance-free operation reduces paper mill downtime.

#### OPERATION:

The paper mills run a rigorous schedule of 24 hours a day, 7 days a week, often for 6 to 12 months without any shutdowns. It is important all equipment be in good working order. Because of the continuous duty, maintenance free operation of the CAT PUMP, it is ideally suited for these heavy demands. There are several steps in the process of converting wood to paper. Two of these steps involve removing water from the cellulose fiber using wire screens and felts.

Cellulose sticks to both the wire screen and the felt. Below each is a 10 foot pipe approximately two to three inches in diameter containing up to 24 nozzles. This apparatus oscillates and sprays cold water on the screens and felts to remove trapped particles before returning to receive another application of wet cellulose.

Using a CAT PUMP high pressure system for this cleaning increases screen life, reduces downtime and helps assure a quality product.



After logs are debarked, the wood is run through a grinder and chopped into 5/8" chips. The chips are then cooked to remove the lignum and leave only a cellulose material. Water is added and the pulp advances to the wet end of the paper machine called the trough.

The pulp is spread on a wire screen and passed over a suction box containing a vacuum pump to remove approximately 70% of the water. After the wire screen, the paper sheet slides onto the felt, which soaks additional water from the paper product. Both the felt and the wire screen need regular cleaning to do an effective job.



*“Customer confidence is our greatest asset”*

Products described hereon are covered by one or more of the following U.S. patents 3558244, 3652188, 3809508, 3920356, 3930756 and 5035580

Aug 1999 8940

## **World Headquarters**

### **CAT PUMPS**

**1681 - 94th Lane N.E. Minneapolis, MN 55449-4324**

**Phone (612) 780-5440 — FAX (612) 780-2958**

e-mail: [sales@catpumps.com](mailto:sales@catpumps.com)

[www.catpumps.com](http://www.catpumps.com)

## **International Inquiries**

**FAX (612) 785-4329**

e-mail: [intlsales@catpumps.com](mailto:intlsales@catpumps.com)



*The Pump with "Nine Lives"*

## **CAT PUMPS (U.K.) LTD.**

1 Fleet Business Park, Sandy Lane, Church Crookham, Fleet  
Hampshire GU13 0BF, England

Phone Fleet 44 1252-622031 — Fax 44 1252-626655

## **N.V. CAT PUMPS INTERNATIONAL S.A.**

Heiveldkens 6A, 2550 Kontich, Belgium  
Phone 32-3-450.71.50 — Fax 32-3-450.71.51

e-mail: [cpi@catpumps.be](mailto:cpi@catpumps.be) [www.catpumps.be](http://www.catpumps.be)

## **CAT PUMPS DEUTSCHLAND GmbH**

Buchwiese 2, D-65510 Idstein, Germany  
Phone 49 6126-93030 — Fax 49 6126-930333  
e-mail: [catpumps@t-online.de](mailto:catpumps@t-online.de) [www.catpumps.de](http://www.catpumps.de)